

Com.X IP PBX brochure

Integrated Communicator for SOHO to SMME



Access a new world of feature rich, connected anywhere telephony, at low cost and low risk



Com.X IP-PBX is a cost effective, best of breed communications platform for the SMME

Managed Services: wanderweb^{net} ready, for secure, host portal to connect provision and maintain ANY Com.X device on ANY network.

Multiple-User Types: Analogue phones, IP phones, WebRTC client

BYOD: wanderweb^{net} provides virtual multimedia IP phone in a web browser or mobile app

One Number: Communicate on any smart device, supporting multiple logins (PC, tablet, smart phone), “twinning” with desktop phone

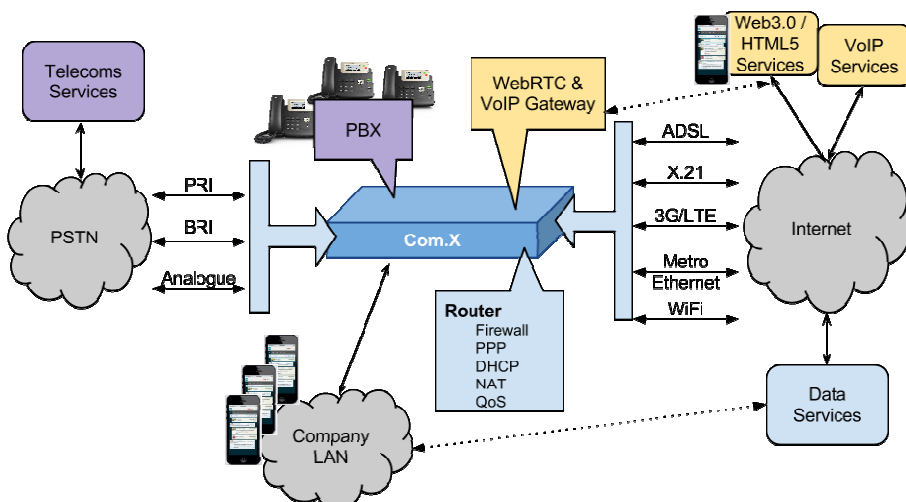
Value Add Applications: Easy addition of real time Call Center Analyser, POPI compliant “Voice Logger” and Operator Panel & User HUD

Increased Business Efficiency: Secure, unified communications & collaboration for connecting multi-branch environments and remote workers

Increased productivity: Queues, IVR, Camp On, Call Barging, Click to Dial, Integrated Call Recording, Voice Mail to Email, and many more

Voice, Data and Web Services Convergence

- “3-in-One” package: Router/Firewall + WebRTC / IP Gateway + PBX
- wanderweb^{net} portal for device connect, monitoring and alerting
- Roam securely on any smart device, via any network



www.farsouthnet.com

Copyright © 2007-2016 Far South Networks (Pty) Ltd

Intel and the Intel logo are trademarks of Intel Corporation U.S. and/or other countries

- **Networking:** DHCP, VPN, VLAN, HTTP
- **Router/Firewall:** NAT & NAT traversal, SIP ALG, ACL, Filters, DMZ
- **QoS:**
 - Class of Service:
 - VLAN Priority Code Points, IEEE 802.1P
 - Differentiated Services Code Points (DSCP)
 - ViBE integration
- **SIP Gateway:**
 - WebRTC, SIP, Telco (PSTN or ISDN)
 - Back-to-Back User Agent (B2BUA)
 - Call Recording, on device
 - T.38 fax
- **PBX features:** IVR, Call transfer, Follow-Me, Call forward, Pick-up, Parking and Camp On, Ring Groups, Voice Mail, Multi-tenant, Click to call, Operator panel, Outlook integration, Intercom and paging, DISA, Phone book, Time Groups, Class of Service calls, Email support (voice mail & alerts), UPS management, TAPI support, including many more...

Platform Main Features:


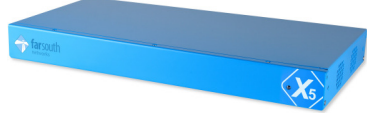
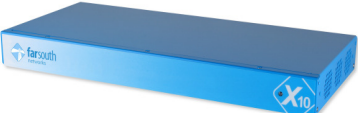

- **Rack or Desk-mount**
- **Managed Services:** wanderweb^{net} Connect, Provision, Monitor centrally via secure host portal
- **CODEC's:** Opus, G.729a, G.711 (A/u), G.723, G.726, ILBC, GSM
- **Telephony interface options:**
 - Analogue (FXO)
 - ISDN: Basic Rate and Primary Rate
 - Users: Analogue (FXS), IP extensions
 - WebRTC client
- **Expansion via LAN based Comma iTA**
- **LAN / WAN:**
 - 4-port Gigabit Ethernet (RJ-45)
 - ADSL2+ (RJ-11)
 - X.21 (DB15)
- **Fixed Mobile Access: GSM, 3G or LTE, 1 SIMM, dual diversity antenna**
- **IP phone auto-provisioning: Yealink, SNOM, Polycom**
- **On-line, remote software updates**
- **Licensed features:**
 - Operator Panel & User HUD: Web UI with Call Notification, IM, Presence, VM and Recordings access, Directory list, and more...
 - Hosted “Call Logger” (encrypted to FAIS, FICA, POPI compliant)
 - “Real Time” Call Center Analyser: Agent and Queue Statistics & Report Generator
- **Certification: TBR3, TBR4, TE-001, EN60950, CISPR22**
- **CDR's with 3rd party TMS support**
- **1-year h/w warranty, 1-year s/w assurance**
- **ICASA type approval. Neotel approved.**

Com.X IP PBX brochure

Integrated Communicator for SOHO to SMME



Com.X Short-form Specification

	Com.X5 Lite	Com.X5		Com.X10	Com.X20
Product Image					
Market	SOHO	Smaller SMME		Larger SMME	Enterprise
Users	5 to 20	20 to 50	50 to 100	100 to 450	450 to 1000
Maximum external calls	4	8	16	30, 60, 90 & 120	360
Server Specification	Intel Atom E620 600MHz RAM: 512MB DDR2		Intel Atom E660 1.3GHz RAM: 512MB DDR2	Intel Bay Trail N2930 CPU Quad core 1.83GHz RAM: 4GB DDR3	Intel i7-3612QE CPU RAM: 8GB DDR3
Maximum G.729a CODEC's	4	8	16	30, 60, 90 & 120	360
Non-volatile Memory Capacity	16GB SD		64GB SSD, or 500GB RAID 1 HDD	64GB MSATA Optional: Dual 1TB RAID 1 HDD	128GB SSD, or Dual 1TB RAID 1 HDD
Form-factor	Half 19" x 1U	19" x 1U		19" x 1U	Multiple 19" x 1U
Extensions	IP 2 to 4 analogue (FXS)	IP 2 to 24 analogue (FXS)		IP 2 to 8 analogue (FXS)	IP 100's analogue (FXS)
Trunks	SIP 2 to 4 analogue (FXO) 2 BRI	SIP 2 to 24 analogue (FXO) 4 to 8 BRI		SIP 2 to 8 FXO 4 to 8 BRI 1 to 2 PRI	SIP 100's analogue (FXO) Multiple BRI (Up to) 12 PRI
WAN		X.21 (1984kbps max) GbE 3G, LTE (1 SIMM) ADSL2+		X.21 (1984kbps max) GbE	GbE
Fixed Wireless	HSPA+ 21Mbps (850/900/1900/2100 MHz) LTE 100Mbps (800/900/1800/2100/2600 MHz)			-	-
Telephony Expansion	Unlimited, refer to Comma iTA product page				
Ports	4 * 100/1000Base-Tx USB2.0: 2			2 to 3 * 100/1000Base-Tx USB2.0: 2	4 * 100/1000Base-Tx USB2.0: 6
Mount	1U rack or desk mount			1U rack or desk mount	19" rack mount
Dimensions	225mm x 200mm x 44mm	445mm x 200mm x 44mm		427mm x 200mm x 44mm	
Power Supply	12Vdc, 2.5A via ext AC/DC adapter		12Vdc, 5A via ext AC/DC adapter	12Vdc, 5A via ext AC/DC adapter	220V, 50Hz & 12Vdc, 5A ext AC/DC adapter
Maximum recorded channels	4 (SD card)	8 (SD card)	16 (SATA drive)	30, 60, 90 & 120	360
Recording Capacity	SD: 100,000 min (gsm format) SSD: 500,000 min (gsm format) HDD: 1,000,000 min (A-law format)			SSD: 500,000 minutes (gsm format) HDD: 1,000,000 minutes (A-law format)	SSD: 1,000,000 minutes (gsm format) HDD: 1,000,000 minutes (A-law format)

For up to date product news and insights, follow us at: <http://www.linkedin.com/company/far-south-networks>

www.farsouthnet.com

Copyright © 2007-2016 Far South Networks (Pty) Ltd
Intel and the Intel logo are trademarks of Intel Corporation U.S. and/or other countries